



FUNCTIONS


CRITERION
Hotel
—
DALBY



Celebrate AT THE CRITERION



SPACES FOR EVERY OCCASION

At the Criterion Hotel, we offer a variety of versatile function spaces to suit any occasion.

Whether you're after the relaxed vibe of the Deck, the cosy indoor setting of our Front Room, or the open-air charm of the Beer Garden, we have the perfect backdrop for your event.

CONTENTS

Our Spaces	3
Food Packages	7
FAQs	11

CONTACT US

(07) 4662 3303
functions@criterionhoteldalby.com.au



Our Spaces



The Beer Garden



The Deck



The Front Room

★ *The Beer Garden*

**MINIMUM 30 FOR SECTIONED AREA
MAXIMUM 60 SEATED**

A LIVELY SPACE FOR EVERY OCCASION!

Our picturesque Beer Garden is the ideal space for any occasion, surrounded by palm trees, lush greenery and twinkling lights, offering a relaxed outdoor atmosphere perfect for intimate gatherings or larger parties.

Equipped with a large TV screen and a stage for live entertainment, it's the perfect spot to bask in the sunshine or enjoy a starry evening while taking in Queensland's beautiful weather. With outdoor heaters to keep you cosy and umbrella tables providing shade, the Beer Garden ensures comfort in any season.

While it isn't a completely private function area, this vibrant space creates a fantastic atmosphere for you and your group to celebrate any event. Outdoor tap keg bars are also available to elevate your event.

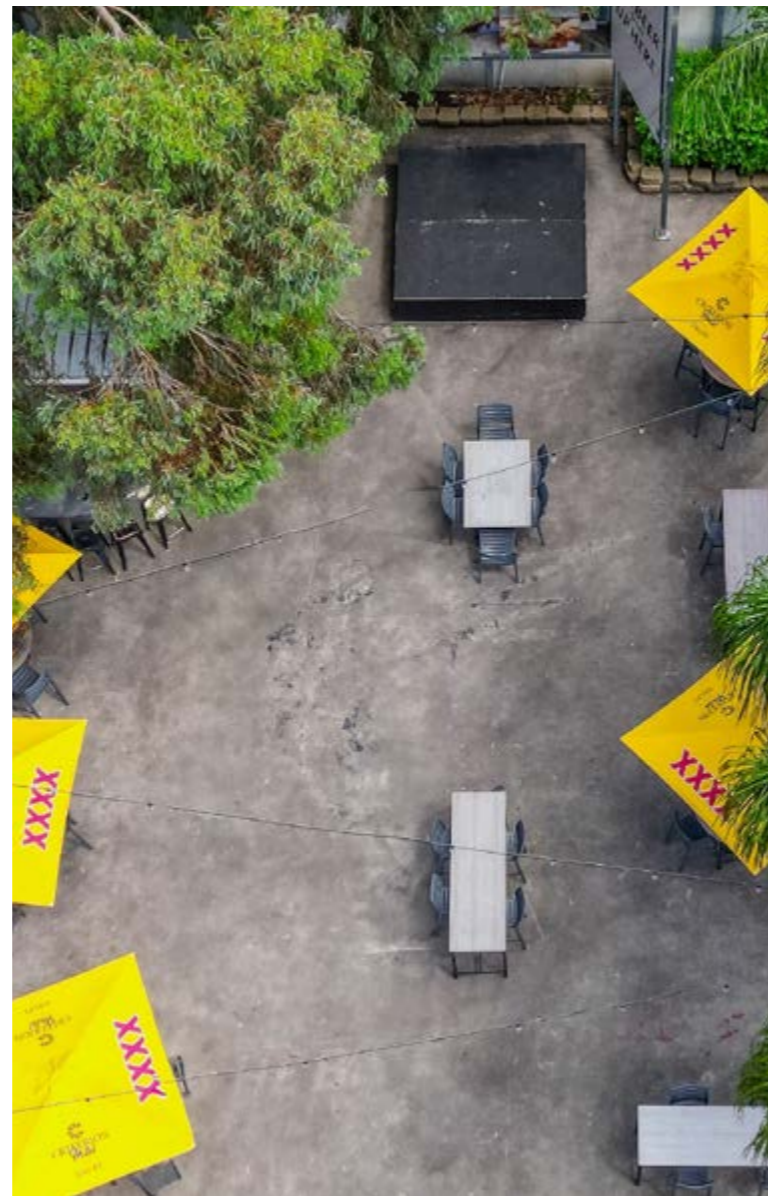
★ *The Deck*

**MINIMUM 35 SEATED
MAXIMUM 40 SEATED OR 50 STANDING**

THE PERFECT BLEND OF OUTDOOR CHARM & INDOOR COMFORT

This sheltered outdoor space combines the fresh air of the outdoors with the cosy feel of indoor comfort, making it the perfect spot for your next event. Overlooking the beer garden, The Deck features two TVs available for media play, offering added entertainment options for your guests. Plus, with its heated area, you'll enjoy comfort no matter the season.

The Deck offers flexible seating options, including both high and low tables to suit your style. While it isn't a private area, it provides an intimate yet social setting, ideal for everything from casual get-togethers to lively celebrations.



★ *The Front Room*

**MINIMUM 35 SEATED
MAXIMUM 40 SEATED**

FLEXIBLE INDOOR SPACE FOR ANY EVENT

Our Front Room is a charming, heated space located at the very front of the restaurant, offering a cosy and inviting atmosphere. Perfect for intimate gatherings or private events, this versatile area can be tailored to your needs, with the option to be closed off for added privacy.

Whether you're celebrating a special occasion or enjoying a relaxed meal with loved ones, the Front Room provides the perfect setting for a memorable sit-down experience.



★ *Food Packages*

We pride ourselves on offering a range of dining options and adopting a flexible approach to meet our clients' needs. Whether you're hosting a casual event with platters, or a more formal gathering with buffet options, we've got you covered.

If our existing menus don't quite suit your event, we are more than happy to provide alternative options and customise menus to suit your specific tastes or dietary needs.

Our utmost priority is to ensure that planning your function is a seamless and stress-free experience. Feel free to drop in and speak with our dedicated functions team to ensure your event is a memorable one.

★ **BUFFET MENUS**

★ **PLATTERS**



★ *Buffet Options*

2 OR 3 COURSE DINING OPTIONS

★ *Platters*

SANDWICH PLATTER

ASIAN PLATTER

GOURMET HOT PLATTER

SEAFOOD PLATTER

AUSSIE PLATTER

GLUTEN FREE PLATTER

CHILDREN'S PLATTER

POTATO CRISP & DIP PLATTER

MIXED LOLLY PLATTER

SMOKED PLATTER

PLEASE CONTACT OUR FUNCTIONS TEAM TO VIEW THE MENU
INCLUSIONS OR DISCUSS TAILORED OPTIONS

ADDITIONAL DIETARY OPTIONS AVAILABLE UPON REQUEST





★ FAQ'S

WHAT TIME CAN WE HAVE ACCESS TO THE FUNCTION SPACES?

Set up of Front Room, Deck and Beer Garden is available from 10am, for functions booked during day, and 2:30pm for functions booked for the evening.

In the circumstances that the space is booked for an evening function on the same day, the guest would be notified (on the day function is booked) and guests will need to be vacated by 4:30pm. If space is required for longer period than our dining times this can be accommodated.

WHAT TIME CAN WE START AND FINISH THE FUNCTION?

Start times can be discussed to suit the specific function booked. Usual trading times for the Hotel are **10am – 10pm (Sun/Mon), 10am – 12am (Tue/Wed/Thur/Fri/Sat)**. These times may vary. Managers Discretion.

10am – 4:30pm (day function) with dining hours being **11:30am – 2:30pm** (unless specific catering has been previously organised with Management)

5pm – Close of Hotel with dining hours being **5:30pm – 8:30pm (unless specific catering has been previously organised with Management)**.

ARE WE ABLE TO SUPPLY OUR OWN MUSIC, DJ OR BAND IF WE WISH?

Any external entertainment must be pre-approved by Management, once approved we have a stage area in the beer garden to accommodate such a request. We can also assist with local artist contacts if needed. The venue is also able to play personal playlists if approved by management and list is supplied 1 week before event. We offer Smart TVs with USB compatibility to play presentations or photo slideshows.

ARE PATRONS UNDER THE AGE OF 18 PERMITTED INTO A FUNCTION?

Minors are permitted on the premises for booked functions; however, anyone under 18 must be accompanied and supervised by a responsible adult. All minors must depart the venue by 10pm.

ARE GUESTS PERMITTED TO BRING IN THEIR OWN CELEBRATION CAKE TO A FUNCTION AND IS THERE A CHARGE?

You are more than welcome to bring your own celebration cake. However, a plating and caking fee will be applied, which will depend on the size of the cake and how many people attending the function.

IS THERE ON-SITE PARKING AVAILABLE FOR FUNCTIONS GUESTS?

There is on-site parking available at the rear of the hotel (enter from Myall street). There is also ample parking available along Myall Street. Criterion Management take no liability for potential theft, damage to vehicles or loss of personal property should any of these occur in the hotel's carpark.

IS THERE WHEELCHAIR ACCESS?

Wheelchair access is available from both Myall Street and Drayton Road to and from the venue. Ambulant toilet facilities are also available in the Bistro area of the hotel. Beer garden is wheelchair accessible from venue carpark however access to the rest of the venue from beer garden is not possible.

DO YOU CATER FOR DIETARIES?

Our Function Menu includes a variety of options that cater to different dietary needs. If you require something additional or have any questions regarding these, we are happy to discuss other options prior to the event to ensure everyone is catered for.




CRITERION
Hotel
—
DALBY

Want to Find Out More?

CONTACT US FOR CUSTOMISED PACKAGES

functions@criterionhoteldalby.com.au

criterionhoteldalby.com.au

(07) 4662 3303 | 77 Drayton St, Dalby, QLD, 4405



SCAN HERE
FOR PACKAGE
T&C'S